



# **WASC/CDE Visiting Committee Final Presentation**

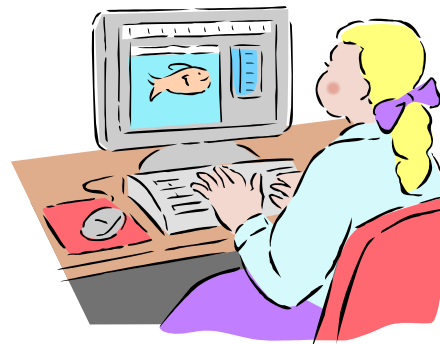
***Palisades Charter High School  
April 16-18, 2012***





## Focus on Learning asks...

- ✓ **How do you know that all students are achieving based on our schoolwide student goals and academic standards?**
- ✓ **Is the school doing everything possible to support high achievement for all its students?**





# **Organization: Vision and Purpose, Governance, Leadership and Staff, and Resources**

## **Areas to Celebrate**

- ✓ **Reflection and revision of the school mission**
- ✓ **Governance policies**
- ✓ **Teacher evaluation process**
- ✓ **Stakeholder involvement in budget process**
- ✓ **Conservative with resources**
- ✓ **Communication**

## **Areas for Focus**

- ✓ **Facility safety issues**
- ✓ **Facility Modernization**
- ✓ **Continue to coordinate professional development**





# Curriculum

## Areas to Celebrate

- ✓ **Diverse Course Offerings meet the needs of the whole child**
- ✓ **Research based PLC model**
- ✓ **Standards and ESLRs based curricula**

## Areas for Focus

- ✓ **Design focused Professional Development Plan**
- ✓ **Support classes for lower performing subgroups**
- ✓ **Continued evaluation of graduation requirements**





# Instruction

## Areas to Celebrate

- ✓ **Continually reflection on instructional delivery through PLCs**
- ✓ **Creation and implementation (through PLCs) of additional instructional opportunities (R&R, tutoring)**
- ✓ **PCHS provides many ways to coach their students through the learning process**
- ✓ **Teachers are very knowledgeable in their content area**

## Areas for Focus

- ✓ **Consistency among PLCs**
- ✓ **Bell schedule to maximize PLC and PD collaboration time and instructional minutes**
- ✓ **Improved collaboration among SPED RSP and GE teachers**
- ✓ **More technology during classroom instruction**
- ✓ **Implementation of more student surveys**





# Assessment and Accountability

## Areas to Celebrate

- ✓ **Common assessments and pacing guides**
- ✓ **Tutorial support**
- ✓ **Implementation of Mastery Manager**

## Areas for Focus

- ✓ **Continued development of benchmark assessments**
- ✓ **Implementation of integrated data system**
- ✓ **Consistent grading policies among departments**
- ✓ **Update or replace SIS**
- ✓ **Agreed rubric alignment**





# School Culture and Support for Student Personal and Academic Growth

## Areas to Celebrate

- ✓ **All stakeholders express strong pride in PCHS**
- ✓ **Parents and students involved in all levels of school operations**
- ✓ **Well-organized communications that reach all parents**
- ✓ **Wide range of emotional, academic, health support services**
- ✓ **Teacher-led support groups for underperforming groups**

## Areas for Focus

- ✓ **More opportunities for bilingual parents to participate in meetings**





# Celebrate Schoolwide Strengths



- ✓ **Students, staff, and parents express strong pride in and appreciation for PCHS**
- ✓ **High level and frequency of communication**
- ✓ **Support for underperforming student groups.**
- ✓ **Diverse course offerings meet the needs of the whole child.**
- ✓ **Continuous reflection and revision**
- ✓ **PLCs**
- ✓ **Accessible tutorial**
- ✓ **Counseling Office and Health**
- ✓ **Standards and ELSRs are embedded within the curriculum**
- ✓ **A wide range of student clubs**





# Critical Areas for Focus

## Areas for Focus

- ✓ **A bell schedule that allows for more PLC and Professional Development collaborative time and to maximize instructional minutes.**
- ✓ **Implement the facility modernization Master Plan,**
- ✓ **Fully develop all PLCs**
- ✓ **Implement a current, integrated data system**
- ✓ **Develop and implement a coordinated professional development program**
- ✓ **Develop a comprehensive teacher evaluation**
- ✓ **Develop and implement a clear systemic schoolwide model of response to intervention**



# Schoolwide Action Plan



**Visualize what will be different for students....**

- ✓ **One year from now?**
- ✓ **Two years from now?**
- ✓ **Three years from now?**